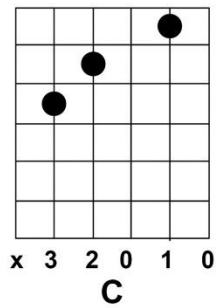
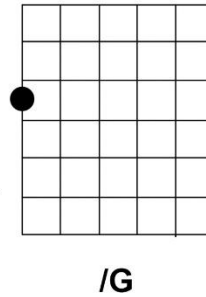


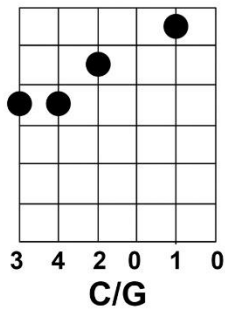
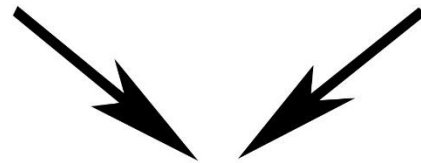
# Slash chord or compound chord



Chord



Bass note



Chord and bass note  
together

Names:

C/G

C slash G

C over G

C over G bass

You can use slash chords to make chord progressions more interesting.

You need to know a little where the basses are on your guitar.  
Look at the schedules below.

<b>d</b>	<b>d#</b>	<b>e</b>	<b>f</b>	<b>f#</b>
<b>a</b>	<b>a#</b>	<b>b</b>	<b>c</b>	<b>c</b>
<b>e</b>	<b>f</b>	<b>f#</b>	<b>g</b>	<b>g#</b>

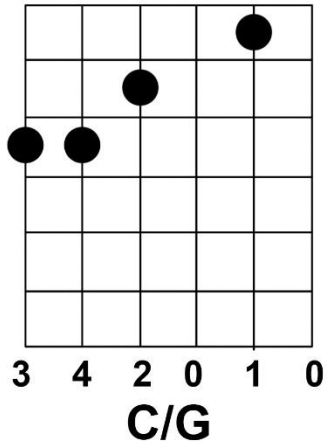
**Bass notes with the sharps  
in between**

<b>d</b>	<b>e<sub>b</sub></b>	<b>e</b>	<b>f</b>	<b>g<sub>b</sub></b>
<b>a</b>	<b>b<sub>b</sub></b>	<b>b</b>	<b>c</b>	<b>d<sub>b</sub></b>
<b>e</b>	<b>f</b>	<b>g<sub>b</sub></b>	<b>g</b>	<b>a<sub>b</sub></b>

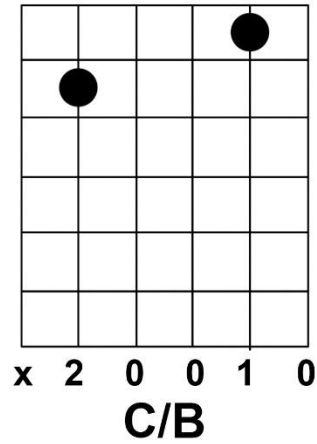
**Bass notes with the flats  
in between**

The root of C major is the note c

The bass note may be below the root, for example C/G



The bass note can also be on the same string, for example C/B, the root disappears.



The bass note can sound higher than the root note, for example C/E, the root disappears.

