

**What is the difference between
3/4 and 6/8 time?**

**To understand this you first
have to know
something about the value
of the notes.**

Note values



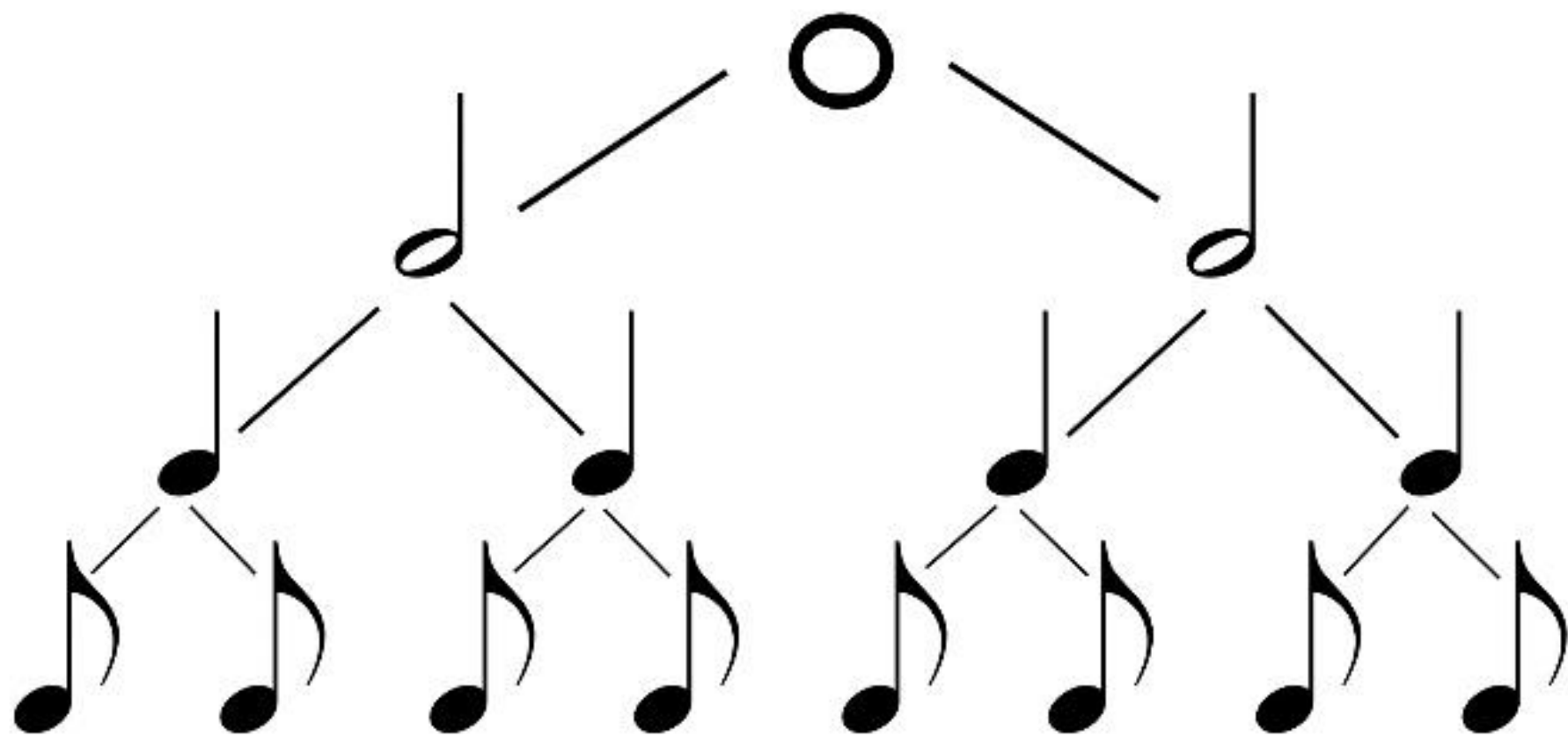
Whole note (Semibreve)

Half note (Minim)

Quarter note (Crotchet)

Eighth note (Quaver)

A whole note lasts for twice as long as a half note and a half note lasts for twice as long as a quarter note, and so on.



Time signature

The time signature is indicated by two numbers one below the other.

The time signature is at the front in the top staff.



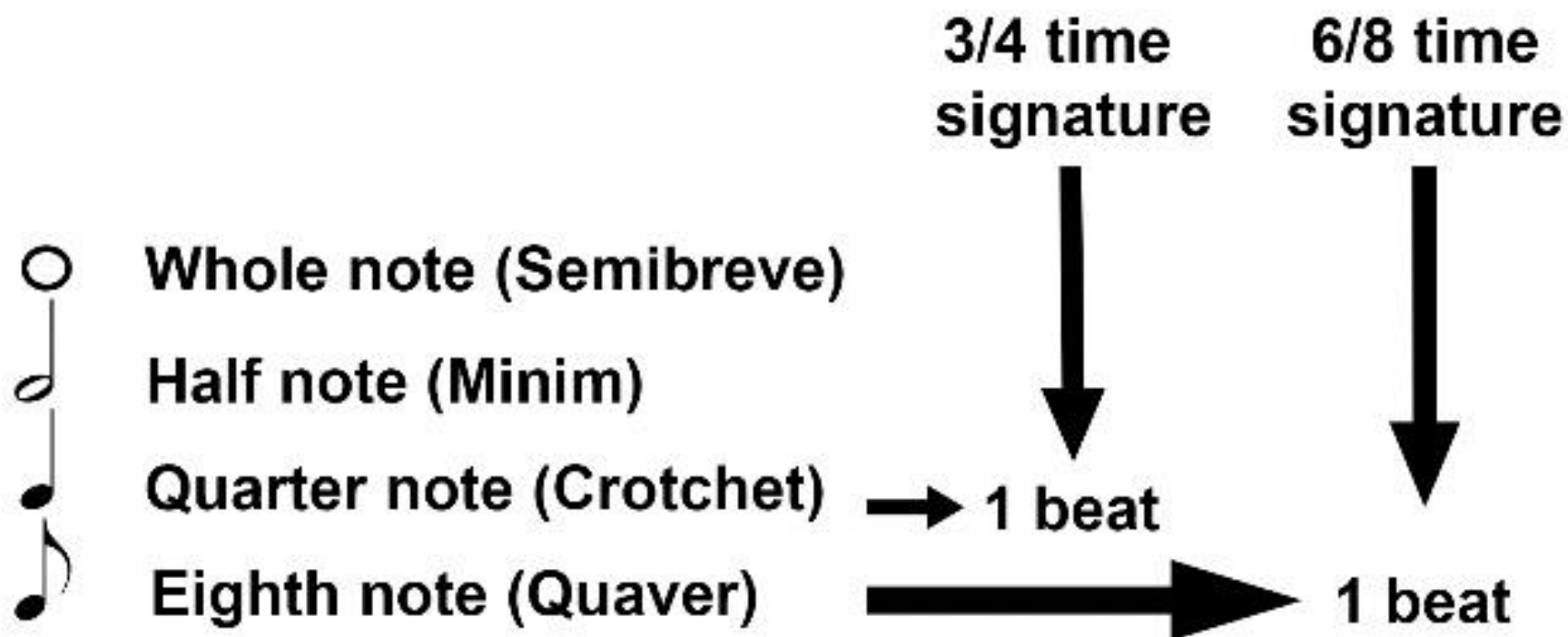
The top number reveals how many beats are in each measure

The bottom number indicates a certain kind of note used to count the beat



So the bottom number tells which note will represent one beat

**The note value tells something
about the note that represents one beat**



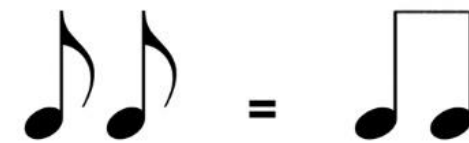
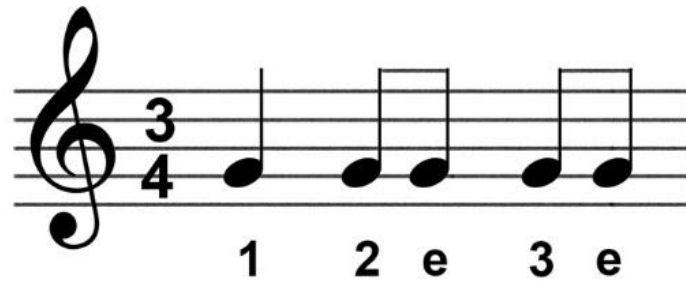
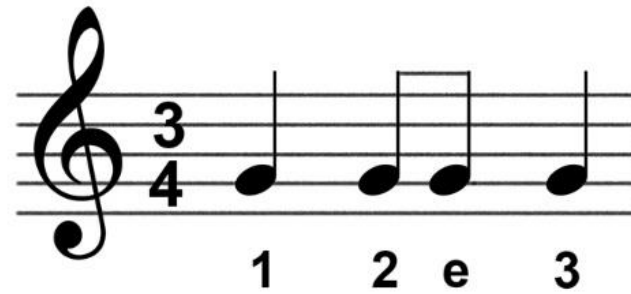
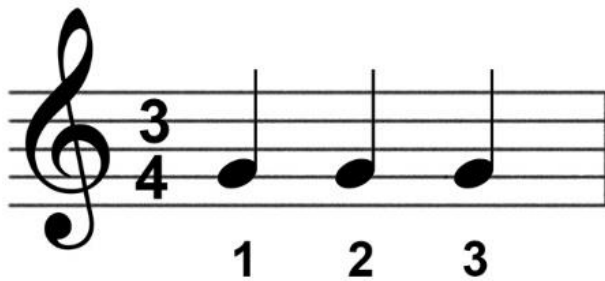
The value of the other notes depends on the note you use to count.

		3/4 time signature	6/8 time signature
	Quarter note (Crotchet)	1 beat	2 beats
	Eighth note (Quaver)	1/2 beat	1 beat

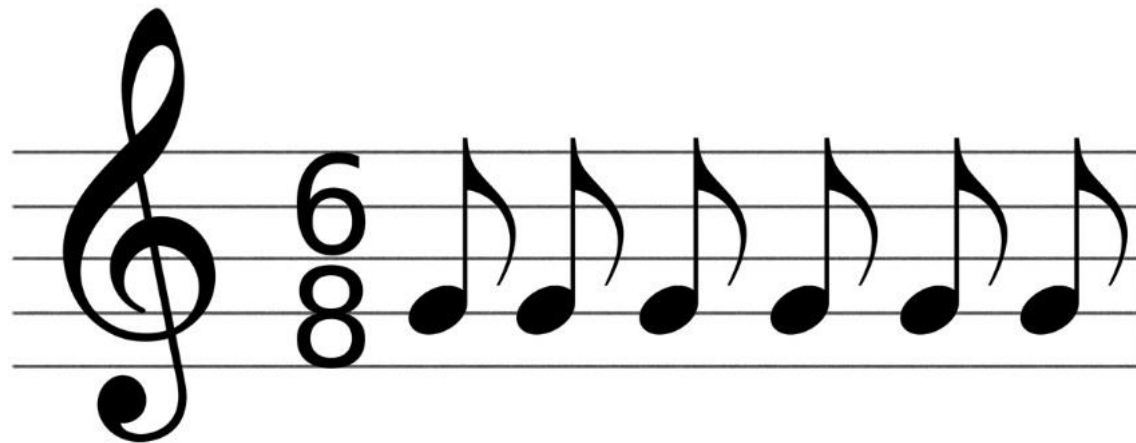
3/4 measure means counting in quarter notes and that there are three quarter notes fit in one measure.



Examples of 3/4 time signature



6/8 measure means counting in eighth notes and that there are six eighth notes fit in one measure.



What is the difference?



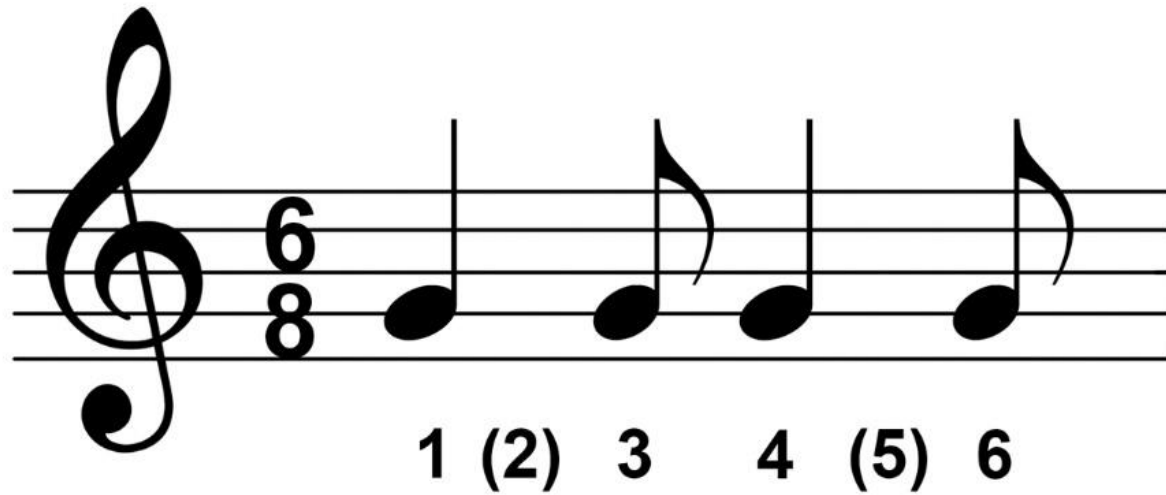
Try to count this measure in 3/4.

3
4

1 2 e (3) e

You will find out that you have to think continuously because there is no beat on the 3rd beat.

And now try it with a 6/8 measure.



Because you can divide the size into two equal parts you get regularity again. The accent is on the first and fourth beat.

The image shows a musical staff in treble clef with a 6/8 time signature. The staff contains two measures of music, separated by a vertical dashed line. Each measure contains two eighth notes. Below the staff, there are two rows of fingerings. The first row shows a '1' with a horizontal line underneath, followed by '(2)' and '3'. The second row shows a '1' with a horizontal line underneath, followed by '(2)' and '3'. The third row shows a '4' with a horizontal line underneath, followed by '(5)' and '6'. The fourth row shows a '4' with a horizontal line underneath, followed by '(5)' and '6'.